



**CABANA**





# INTRODUCTION

At Worklyffe, we believe that the modern workspace should be adaptable, comfortable, and inspiring. With the rise of hybrid work environments, there's a growing need for spaces that balance collaboration and privacy. That's where Cabana comes in—a meticulously designed workspace pod that seamlessly blends aesthetics, functionality, and innovation.

Cabana is more than just a furniture piece; it's a modular, stylish, and ergonomic solution tailored for offices, coworking spaces, and hospitality environments. Whether you need a quiet space to focus, a semi-private area for meetings, or a comfortable lounge setting, Cabana transforms any workspace into an inviting and productive zone.

Cabana is a revolutionary pod furniture system designed to enhance modern workspaces with its modular and sleek design. It seamlessly blends functionality and aesthetics, creating environments perfect for both collaboration and relaxation. With a focus on adaptability, Cabana is suited for various professional settings, from corporate offices to co-working spaces. Its smart integration of modern materials and customizable features ensures both visual appeal and practical efficiency. The thoughtful combination of privacy, comfort, and innovation makes Cabana an essential addition to dynamic work environments. Whether used for focused work, team meetings, or casual interactions, Cabana enhances productivity and engagement.





# Why Choose Cabana?

Traditional office setups often struggle to accommodate the evolving needs of modern professionals. Open floor plans can be noisy and distracting, while private rooms can feel isolating. Cabana provides the perfect middle ground—a thoughtfully designed pod that offers both openness and privacy.

Key benefits of Cabana include:

- **Enhanced Focus & Productivity** – A semi-private setting that minimizes distractions
- **Flexible & Modular Design** – Adaptable to different office layouts
- **Aesthetic Appeal** – A sleek, modern design that elevates workspace interiors
- **Ergonomic Comfort** – Designed for long hours of use without compromising posture
- **Plug-and-Play Setup** – Equipped with integrated technology for seamless work experiences

Cabana is the ideal solution for businesses looking to optimize their workspace while fostering creativity, collaboration, and efficiency.







# Features:

Cabana is loaded with a variety of features designed to enhance user experience. Its built-in lighting solutions ensure optimal brightness for any task, while integrated power outlets provide convenient access to charging. Acoustic panels reduce noise distractions, creating a serene and focused environment. The pods are equipped with customizable shelving and storage options to keep essentials organized and within reach. Additionally, the ergonomic furniture enhances comfort, making it perfect for extended use. These features collectively transform Cabana into a functional and versatile addition to any workspace.

To further enhance functionality, Cabana offers a range of additional accessories:

**Whiteboards:** Ideal for brainstorming sessions, presentations, or collaborative discussions, seamlessly integrated into the design.

**BYO Unit:** A flexible add-on that allows users to bring their own devices or accessories, ensuring a personalized workspace setup.

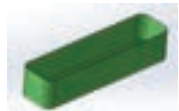
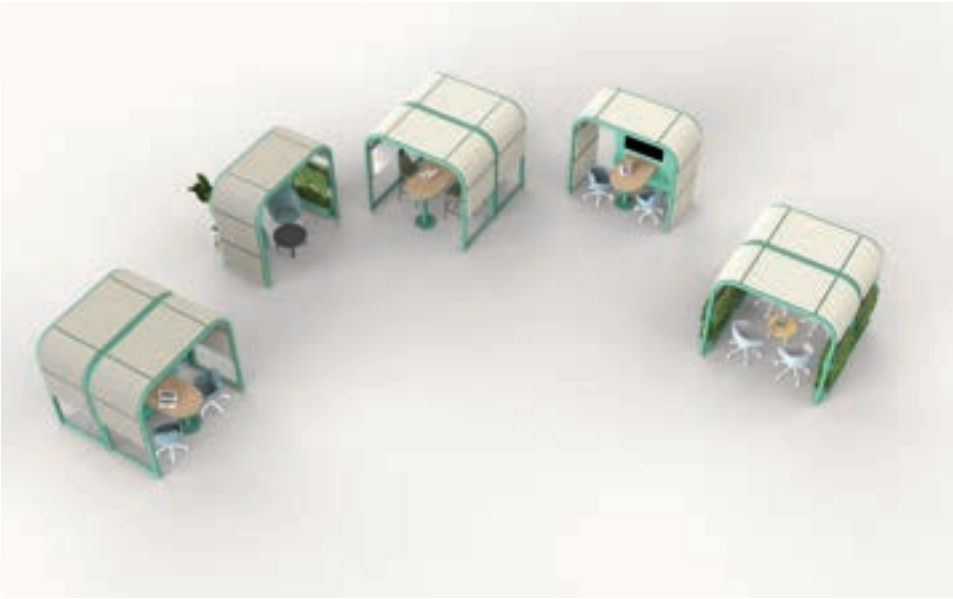
**TV Mounting Unit:** Supports seamless integration of screens for presentations, video conferences, or digital signage.

**Metal Planter Box:** Enhances the biophilic design, adding greenery to promote a calming and refreshing atmosphere.

**Birch Ply Shelf:** Provides elegant storage and display options, maintaining a clutter-free and organized environment.

**Regular and High Tables:** Offers a choice between standard or elevated working surfaces, catering to diverse seating and standing preferences.

With these features and accessories, Cabana is an adaptable and high-performance workspace solution, catering to modern professional and collaborative needs.



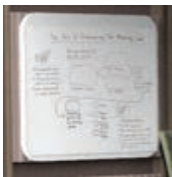
Metal planter box



Birch ply shelf



TV mounting unit



White board



BYO unit



Regular table / High table



# Smart Space Utilization :

Traditional office setups often struggle to accommodate the evolving needs of modern professionals. Open floor plans can be noisy and distracting, while private rooms can feel isolating. Cabana provides the perfect middle ground—a thoughtfully designed pod that offers both openness and privacy.

Key benefits of Cabana include:

- **Enhanced Focus & Productivity** – A semi-private setting that minimizes distractions
- **Flexible & Modular Design** – Adaptable to different office layouts
- **Aesthetic Appeal** – A sleek, modern design that elevates workspace interiors
- **Ergonomic Comfort** – Designed for long hours of use without compromising posture
- **Plug-and-Play Setup** – Equipped with integrated technology for seamless work experiences

Cabana is the ideal solution for businesses looking to optimize their workspace while fostering creativity, collaboration, and efficiency.



# Dynamic Configurations :

Cabana is designed with adaptability in mind, offering various configurations to meet diverse needs. Its modular design allows for easy customization, whether you need a collaborative hub, a quiet retreat, or a casual lounge. The pods can be arranged to optimize space while maintaining a cohesive look. This flexibility makes Cabana suitable for offices, co-working spaces, or even residential areas. Cabana's dynamic configurations ensure it evolves with your environment.



# Biophilic Design :

Inspired by the principles of biophilic design, Cabana integrates natural elements to promote well-being. Features like built-in planters and earthy finishes create a connection with nature, fostering a calming and productive atmosphere. These design choices not only enhance aesthetics but also contribute to a healthier indoor environment. Cabana's biophilic approach brings a refreshing touch of greenery to modern interiors. It's more than furniture; it's a lifestyle choice for harmony and balance.



# Rooms

## Specification guide

- 1
- 2
- 3
- 4
- 5

### STEP 5: Add Walls

Select your wall options.

**Please note:** Adjoining rooms only require a maximum of 3 wall panels.

#### Privacy Walls



##### Upholstered Acoustic Wall

Fixed acoustic wall with Camira Sonus upholstered plywood frame & internal acoustic foam

- 2.4, 3.0, 4.0 panels
- Double sided panels
- Select Fabric from Camira Sonus range [www.camirafabrics.com](http://www.camirafabrics.com)



##### Glass Wall

Fixed glass wall

- 2.4, 3.0, 4.0 panels



##### Curtain Wall

Single Vescom Fogo sheer curtain & curtain rail

- 2.4, 3.0, 4.0 panels
- Select Curtain fabric
- Select fabric from Vescom Fogo or Ellis range [www.vescom.com](http://www.vescom.com)

**Please note:** The installation of Rooms with any glass elements can only be carried out by Connection or an approved sub contractor. There is an additional charge for this service. Please call customer services or ask your account manager for a quotation.

#### Trellis Walls



##### Venetian Trellis Wall

Venetian trellis style wall with angled fixed oak plywood slats & frame

- 2.4, 3.0, 4.0 panels



##### Woodland Wall

Fixed Woodland trellis wall with oak veneer panel & frame

- 2.4, 3.0, 4.0 panels
- Select oak ply or from the Egger or Fenix colour ranges

#### Door Walls



##### Venetian Trellis Door Wall

Venetian trellis style wall with angled fixed oak plywood slats & frame

- 2.4, 3.0, 4.0 panels



##### Glass Door Wall

Fixed glass wall with glass door

- 2.4, 3.0, 4.0 panels
- Select right or left hand door opening

#### Media Walls



##### White Board Wall With Media Panel

Fixed dry wipe whiteboard wall with central media panel

- 2.4, 3.0, 4.0 panels
- Select Laminate or Veneer centre panel
- Select power position and socket options
- Media walls suitable for mounting AV monitors



##### Upholstered Wall With Media Panel

Fixed upholstered wall comprising 2 upholstered panels & oak veneer plywood centre panel. Fabric limited to Camira Sonus

- 2.4, 3.0, 4.0 panels
- Select Laminate or Veneer centre panel
- Select power position and socket options
- Select Fabric from Camira Sonus range [www.camirafabrics.com](http://www.camirafabrics.com)

#### Interactive Walls



##### White Board Wall

Fixed dry wipe whiteboard wall comprising 3/4 whiteboard panels

- 2.4, 3.0, 4.0 panels
- Double sided panels

#### Sliding Walls



##### Slotted PET Sliding Wall

Slotted PET design

- 2.4 & 3m have 3 panels. 4m has 4 panels.

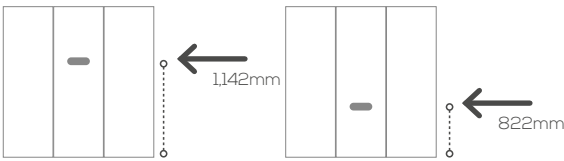


##### Etched PET Sliding Wall

Etched PET design, upholstered in Camira Sonus.

- Limited to one fabric selection per wall
- 2.4 & 3m have 3 panels. 4m has 4 panels.

#### Indicate Wall Power Positioning



1) Poseur Height

2) Diner Height

**Please note:** The central media panel will accommodate up to a 65inch Monitor/TV weighing no more than 40KG subject to correct bracket mount and fixing being used. For further advice on this contact our sales department.



# Rooms

## Specification guide

- 1
- 2
- 3
- 4
- 5

**STEP 5: Add Walls**  
Select your wall options.

Sliding Wall finishes

**Slotted PET Panels**

Select your design and panel colour

**1. Panel Design**



**2. Panel Colours**

Dusk



Peace



Marble



Smoke



Bungaroosh



Palace Pink

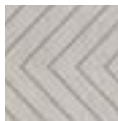


**Etched PET Panels**

Select your design, base board colour and fabric colour

**1. Panel Design**

Chevron



Circle



Cuboid



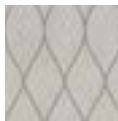
Flow



Linear



Swirl



**2. Base Board Colour**

Dusk



Peace



Marble



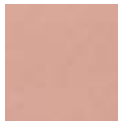
Smoke



Bungaroosh



Palace Pink

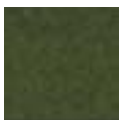


**3. Fabric Colour (Camira Sonus range)**

Audio



Vocal



Music



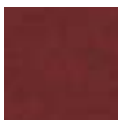
Beat



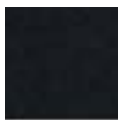
Voice



Chime



Amp



Rap



Song



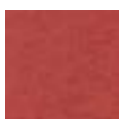
Pop



Acoustic



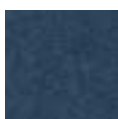
Chorus



Lyric



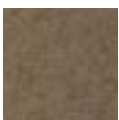
Classical



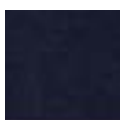
Soul



Melody



Verse









**Head Office & Showroom**

Unit 4 AAA Park  
Leeds Road  
Mirfield  
WF14 0DE

Tel: 01484 600 100  
info-UK@flokk.com

**London Showroom**

31 Great Sutton Street,  
Clerkenwell,  
London,  
EC1V 0NA

Tel: 020 7253 9877

**Manchester Showroom**

3-7 Booth Street,  
Manchester,  
M2 4DU