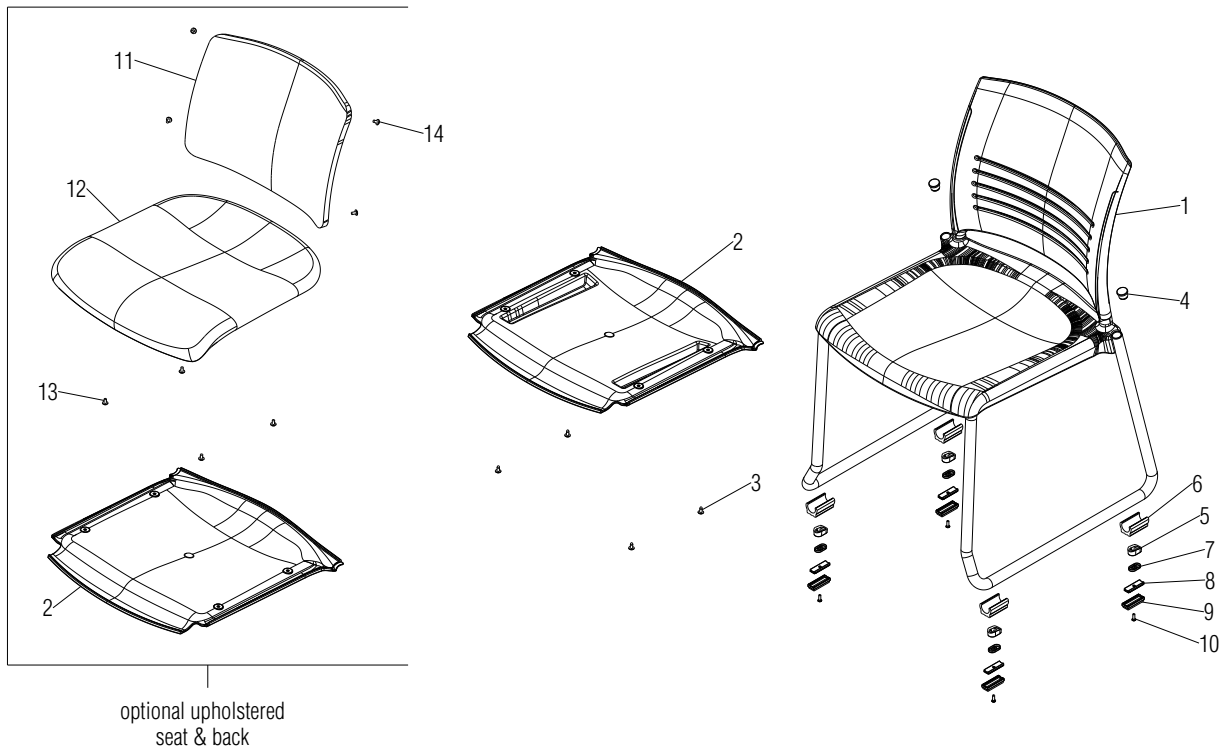


Parts Diagram

Strive® Seating
Sled Base Armless Chair

March 2023



optional upholstered
seat & back

.LXX = Select Laminate

Item 1 is a replacement chair frame that includes all parts (seat/back/frame are not servicable).

Items 5, 6, and 7 are used on chairs manufactured before 5/4/2022.

Item 5 glide 06.0028.BLX requires Item 7 shoe PT.06.6034.X and Item 10 screw PC.12.0583.X for attachment.

Item 5 glide PT.06.6029.BLX requires Item 10 screw 12.4016.X for attachment.

Item 6 glide 10.0127.X requires Item 10 screw PC.12.0583.X for attachment.

Item 8 glide body uses Item 9 glide cap and requires Item 10 screw 12.4016.X for attachment.

Item 15 glide cap removal tool (not shown) is used to remove old glide caps for replacement of felt caps. See KI-RR-000030 for instructions.

Item	Part Number	Item Description	Req Qty	Item	Part Number	Item Description	Req Qty
1	SRFP	Replacement Chair Frame, Poly	1	8	46.4340.X	Glide Body, Sled Base Snap-Fit (see note)	4
	SRFU	Replacement Chair Frame, Upholstered Seat	1	9	46.4338.X	Glide Cap, Sled Base Snap-Fit Steel (see note)	4
	SRFB	Replacement Chair Frame, Upholstered Seat & Back	1		46.4337.X	Glide Cap, Sled Base Snap-Fit Poly (see note)	4
2	46.2240.BL.X	Shroud, Seat with Bumpers (poly chair)	1		46.4339.X	Glide Cap, Sled Base Snap-Fit Non-Skid (see note)	4
	46.2228.BL.X	Shroud, Seat (upholstered chair)	1		46.4331.X	Glide Cap, Sled Base Snap-Fit Felt (see note)	4
3	12.0011.X	Screw, M6 x 18mm PPH BosScrew	4	10	12.4016.X	Screw, #8 x 1/2" PPH Type 25 T/C ZC (used on Items 5 & 8)	4
4	53.6550.XX.X	Arm Cap, Plastic	2		PC.12.0583.X	Screw, #8 x 1/2" PPFH Type-B T/SZC (used on Items 5 & 6/7)	4
5	06.0028.BL.X	Glide, Stainless Steel (see notes)	4	11	STRBC	Assembly, Upholstered Backrest Cushion	1
	PT.06.6029.BLX	Glide, Black Plastic (see notes)	4	12	STRRC	Assembly, Upholstered Seat Cushion	1
6	10.0127.X	Glide, Non-Skid (see note)	4	13	12.0055.CZ.X	Screw, #10-16 x 1/2" Type AB T/F BLK ZC	4
7	PT.06.6034.X	Shoe, Stainless Steel Glide (see note)	4	14	12.0111.XX.X	Screw, #10-24 x 3/8" PTH M/S ZC x/ PATCH	4
				15	10.0138.X	Removal Tool, Swivel Glide Cap (not shown) (see note)	1

