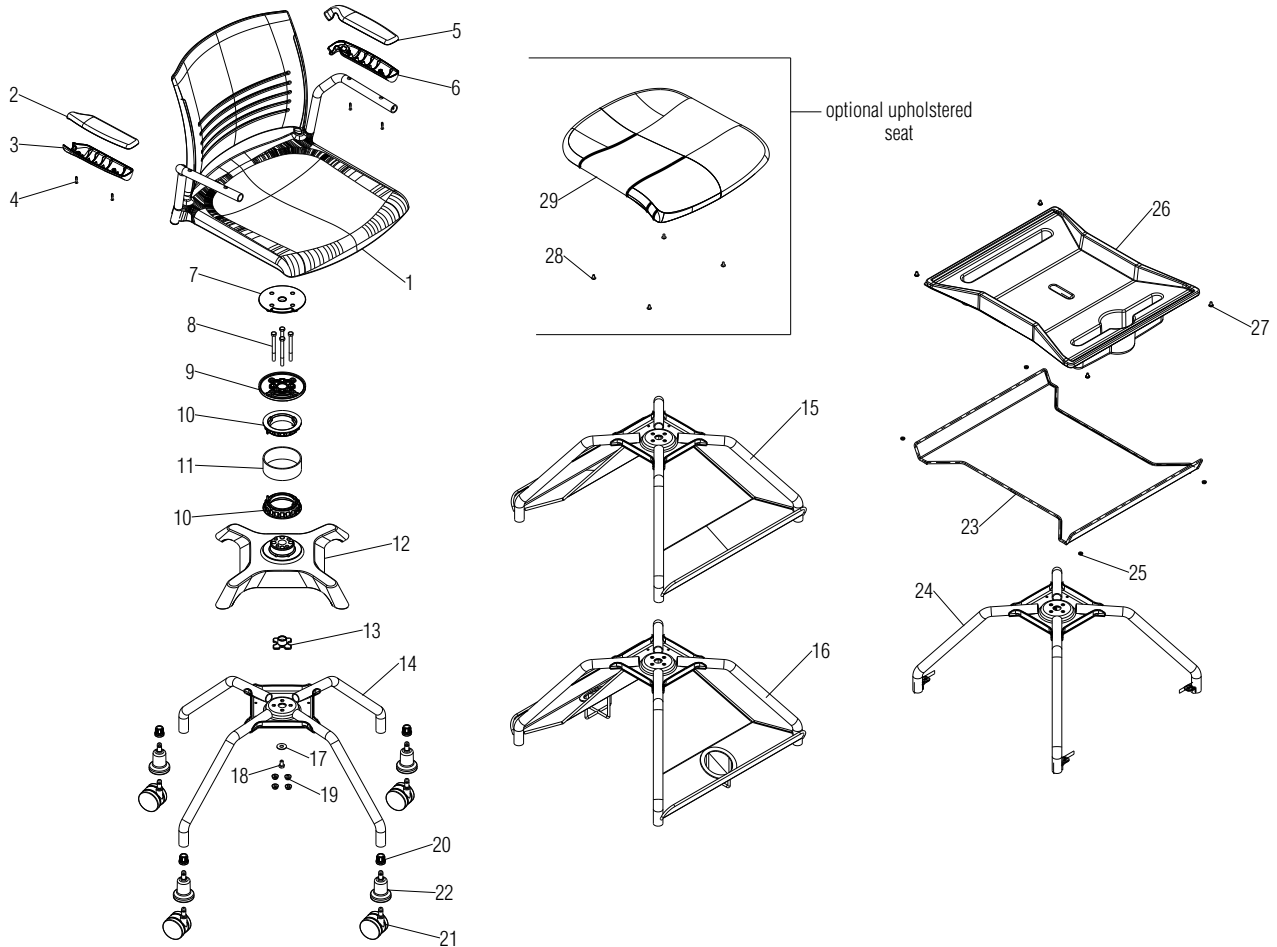


# Parts Diagram

Learn2™ Classroom Furniture

Strive® Seating Armchair  
With and Without Accessories

November 2023



.XX = Select Color

| Item | Part Number     | Item Description                             | Req Qty | Item | Part Number     | Item Description                                | Req Qty |
|------|-----------------|--|---------|------|-----------------|---|---------|
| 1    | 2SRS            | Chair, Strive Pressure Fit with Arms         | 1       | 16   | 47.1014.CP.XX.X | Weldment, Chair Frame with Cup Holder Bookracks | 1       |
| 2    | 46.5384.RH.XX.X | Cap, Upper Closed End Arm, RH                | 1       | 17   | 12.2206.X       | Washer, 5/16 x 1 O.D.                           | 1       |
| 3    | 46.5383.RH.XX.X | Cap, Lower Closed End Arm, RH                | 1       | 18   | 12.2207.X       | Bolt, 5/16-18 x 1/2 Hex Head w/ Patch           | 1       |
| 4    | 12.0696.X       | Screw, #8 x 5/8 TX OV HD T-B BLK OX          | 4       | 19   | 12.1154.X       | Nut, 5/16-18 Hex Flange Centerlock BLK ZC       | 4       |
| 5    | 46.5384.LH.XX.X | Cap, Upper Closed End Arm, LH                | 1       | 20   | 46.0386.BL.X    | Bushing, 13 Gage Tube Caster                    | 4       |
| 6    | 46.5383.LH.XX.X | Cap, Lower Closed End Arm, LH                | 1       | 21   | 09.0440.BL.X    | Caster, 60mm Diameter Carpet                    | 4       |
| 7    | 47.1035.X       | Bushing, Seat Swivel with Spacer and Bumpers | 1       |      | 09.0441.BL.X    | Caster, 60mm Diameter Hard Floor                | 4       |
| 8    | 12.2205.X       | Screw, 5/16-18 x 3 1/4 Hex Head GR2 Machine  | 4       | 22   | 10.0150.X       | Glide, Bell                                     | 4       |
| 9    | 47.1002.X       | Casting, Upper Bearing Mount                 | 1       | 23   | 47.1042.XX.X    | Weldment, Flat Bookrack                         | 1       |
| 10   | 47.1010.X       | Bushing, Tablet Arm Rotation Around Seat     | 2       | 24   | 47.1014.FB.XX.X | Weldment, Flat Bookrack Chair Frame             | 1       |
| 11   | 42.0005.XX.X    | Tube, Tablet Hub                             | 1       | 25   | 12.0023.TM.X    | Nut, #10-24 Hex w/ Lock Washer                  | 4       |
| 12   | 47.1001.BL.X    | Casting, 4-Leg Frame                         | 1       | 26   | 47.1097.XX.X    | Bookrack, Flat Plastic                          | 1       |
| 13   | 47.1009.X       | Bushing, Seat Swivel                         | 1       | 27   | 12.0838.X       | Screw, #12-16 x .38" #10 Truss Head             | 4       |
| 14   | 47.1014.XX.X    | Weldment, Chair Frame                        | 1       | 28   | 12.0111.XX.X    | Screw, #10-24 x 3/8" PTH M/S ZC w/ PATCH        | 4       |
| 15   | 47.1014.BK.XX.X | Weldment, Chair Frame with Bookracks         | 1       | 29   | STRRC           | Assembly, Upholstered Seat Cushion              | 1       |