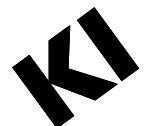
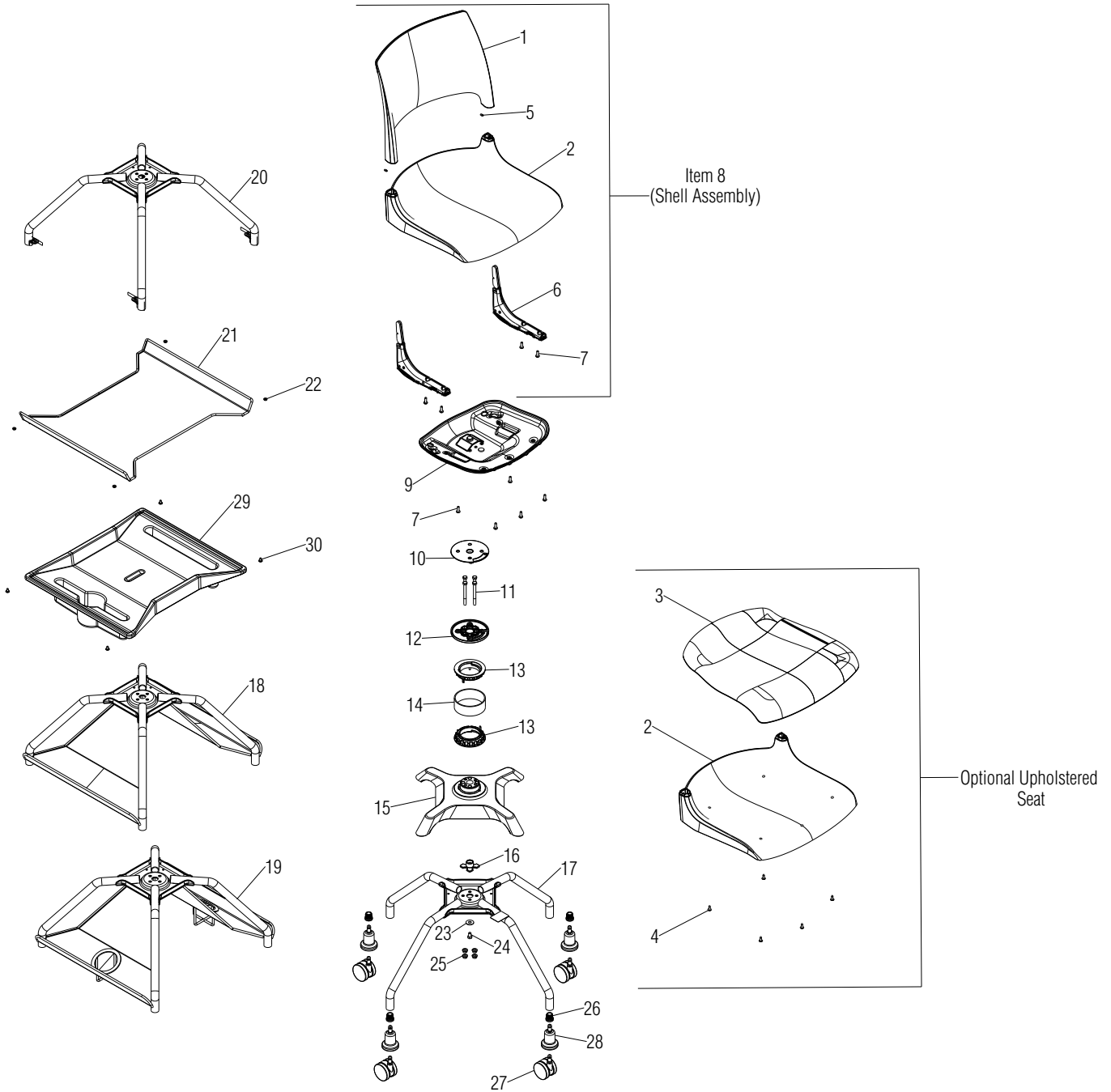


# Parts Diagram

Learn2™ Classroom Furniture  
Doni™ Seating Collection Armless Chair

April 2022



# Learn2™ Classroom Furniture - Doni™ Seating Collection Armless Chair

## Parts Diagram

.XX = Select Color

**Note:** Doni Learn2 is not available with an upholstered back.

Item 1 does not include Item 5 hardware.

Item 8 includes: Items 1, 2, 5, 6 & 7. When Item 7 is included in Item 8 assembly, a quantity of four will be shipped installed, and a quantity of eight will be shipped KD (knocked down) for the seat support. This is to accommodate the different Doni models.

Item	Part Number	Item Description	Req Qty
1	4206.XX.X	Backrest, Solid Poly Color (poly back only) (item 5 not included)	1
	4206.U.XX.X	Backrest, Solid Poly Color w/ Holes (upholstered back only)	1
	4201.OXX.IXX.X	Backrest, Two-Tone Poly Color (poly back only)	1
2	4205.XX.X	Seat, Solid Poly Color (poly seat only)	1
	4205.U.XX.X	Seat, Solid Poly Color w/ Holes (upholstered seat only)	1
	4200.OXX.IXX.X	Seat, Two-Tone Poly Color (poly seat only)	1
	4200.U.OXX.IXXX	Seat, Two-Tone Color w/ Holes (upholstered seat only)	1
3	DNRSC	Cushion, Seat (upholstered seat only) Doni (item 4 included)	1
4	12.0511.X	Screw, #10-16 x 5/8" (upholstered seat only)	5
5	46.4230.X	Set Screw, M5 x 0.8 x 10 Hex Socket	2
6	46.4202.X	Assembly, Backrest Support Mechanism	2
7	12.0011.X	Screw, M6 x 18 PPH BosScrew	9
8	4225.XX	Assembly, Seat & Back, Solid Poly Color (see note)	1
	4225.U.XX	Assembly, Seat & Back, Solid Poly Color, Uph. Seat (see note)	1
	4225.B.XX	Assembly, Seat & Back, Solid Poly Color, Uph. Seat & Back (see note)	1
	4225.OXX.IXX	Assembly, Seat & Back, Two-Tone Poly Color (see note)	1
	4225.U.OXX.IXX	Assembly, Seat & Back, Two-Tone Poly Color, Uph. Seat (see note)	1
9	46.4243.L2.BL.X	Weldment, Doni Seat Support	1
10	47.1035.X	Bushing, Seat Swivel with Spacer and Bumpers	1
11	12.2205.X	Screw, 5/16-18 x 3 1/4 Hex Head GR2 Machine	4
12	47.1002.BL.X	Casting, Upper Bearing Mount	1
13	47.1010.X	Bushing, Tablet Arm Rotation Around Seat	2
14	42.0005.XX.X	Tube, Tablet Hub	1
15	47.1001.BL.X	Casting, 4-Leg Frame	1
16	47.1009.X	Bushing, Seat Swivel	1
17	47.1014.XX.X	Weldment, Chair Frame	1
18	47.1014.BK.XX.X	Weldment, Chair Frame with Bookracks	1
19	47.1014.CP.XX.X	Weldment, Chair Frame with Cup Holder Bookracks	1
20	47.1014.FB.XX.X	Weldment, Flat Bookrack Chair Frame	1
21	47.1042.XX.X	Weldment, Flat Bookrack	1
22	12.0023.TM.X	Nut, #10-24 Hex w/ Lock Washer	4
23	12.2206.X	Washer, 5/16 x 1 O.D.	1
24	12.2207.X	Bolt, 5/16-18 x 1/2 Hex Head w/ Patch	1
25	12.1154.X	Nut, 5/16-18 Hex Flange Centerlock BLK ZC	4
26	46.0386.BL.X	Bushing, 13 Gage Tube Caster	4
27	09.0440.BL.X	Caster, 60mm Diameter Carpet	4
	09.0441.BL.X	Caster, 60mm Diameter Hard Floor	4
28	10.0150.X	Glide, Bell	4
29	47.1097.XX.X	Bookrack, Flat Plastic	1
30	12.0838.X	Screw, #12-16 x .38" #10 Truss Head	4

